

## SECTION 2

# PARTNERS IN THE UK TOP 100 LAW FIRMS

Iftkhar Ahmed	28	Alicia Foo	43	Frank Morton	57
Saad Ahmed	28	Sunil Gadhia	44	Habib Motani	58
Shibeer Ahmed	28	Vinay Ganga	44	Hardeep Nahal	58
Zarina Ahmed	30	Kuljit Ghata-Aura	45	Salim Nathoo	59
Yogi Amin	30	Trevor Goode	45	Murali Neelakantan	59
Richard Anyamene	31	Madhavi Gosavi	46	Segun Osuntokun	60
Rafi Azim-Khan	31	Harmajinder Hayre	46	Raj Parker	60
Ramatu Banga	32	Anne Hoe	48	Kavita Patel	62
Sohail Barkatali	32	Farah Ispahani	48	Anand Raghupati	62
Tushar Bhate	32	Hanh Jelf	48	Kamal Rahman	63
Farmida Bi	33	Rajat Jindal	49	Jeremy Raj	63
Mary Boakye	33	Seema Jobanputra	49	Amar Rashid	64
Paul Bugingo	34	Smeetesh Kakkad	49	Yash Rupal	64
Annette Byron	34	Sunil Kakkad	50	Shashi Sachdeva	64
David Carter	35	Nish Kanwar	50	Michael Salau	66
Angela Cha	35	Sundeep Kapila	51	Ash Saluja	66
Rabinder Chaggar	36	Raj Karia	51	Pawan Sharma	67
Arnondo Chakrabarti	36	Pranai Karia	51	Raj Sharma	67
Edward Chan	37	Wasim Khan	52	Rajita Sharma	67
Heather Chandler	37	Raj Kulasingam	52	Jane Cheong Tung Sing	68
Suki Chhokar	38	Sarah Lee	52	Sonio Singh	68
Baljit Chohan	38	Miranda Leung	53	Leon Stephenson	69
Philip Chong	40	George Lubega	53	Vimal Tilakapala	69
Robin Dabydeen	40	Sushma MacGeoch	54	Mahesh Varia	69
Yetunde Dania	41	Ravinder Mahal	54	Nilufer von Bismarck	70
Satpaul Dard	41	Indraj Mangat	55	Sandra Wallace	70
Cecily Davis	42	Rajindh Mangat	55	Sanjev Werna-kula-suriya	71
Ranjit Dhindsa	42	Moni Mannings	55	Sarah Wiggins	72
Sanjeev Dhuna	42	Thelma Marshall	56	Nusrat Zar	72
Fahad Doha	43	Tak Matsuda	56		
Rustam Dubash	43	Sandeep Maudgil	57		

### Iftkhar Ahmed

Iftkhar Ahmed is a partner at Eversheds, an international law firm. He is based at the Birmingham office and his main area of work is real estate and he has worked on a wide range of commercial real estate work. As head of the leisure sector group he now specializes in leisure and occupier-based work for major corporations. A recent transaction was the disposal of various holiday parks for a major leisure operator to the tune of £250 million.

### Saad Ahmed

Saad Ahmed is a partner at Hill Dickinson, the law firm based in the North West of England, with offices in Liverpool, London, Manchester and Chester. Saad is based at the Manchester office in the Company and Commercial Division and specializes in corporate tax and share scheme work. His experience also includes employee share plans (including long-term incentive plans, employee trusts and traditional UK tax approved plans) and Enterprise Management Incentive schemes. Saad joined Hill Dickinson in 2005 and became a partner in 2006. He is a qualified member of the Chartered Institute of Taxation.



### ☪ Shibeer Ahmed

Shibeer Ahmed is a partner at international law firm Lovells. He is an expert in banking and project finance with extensive experience of general banking and project financings and re-financings, including transport infrastructure, PFI/PPP and major international energy and petrochemicals projects. Shibeer has been described in the *Legal 500* as “consistently excellent” in the delivery of services to clients. In one major transaction, he advised project sponsors, commercial banks, monolines and the EIB on five major Greek motorway projects with the total value in excess of €8 billion. He also advised on six major Portuguese real toll project financings and refinancings with a total value in excess of €3.5 billion. Shibeer, a UK partner, was recently seconded as head of Lovells Dubai office. He has chaired and spoken at numerous conferences on financings.

# One firm, eight time zones.

Can you handle the pace?

Lovells

To find out more about training at Lovells visit our  
graduate website at [www.lovells.com/graduates](http://www.lovells.com/graduates)

Lovells is an international legal practice comprising Lovells LLP and its affiliated businesses.



## Zarina Ahmed

Zarina Ahmed has been a partner at Shoosmiths, a national law firm, since 2000. She is head of Unit 7 in the Legal Expenses Division based in Basingstoke. Unit 7 deals with personal injury, motor accident work for divisions of the Royal Bank of Scotland, namely Direct Line and UKI Insurance. After being admitted as a solicitor in 1993, Zarina spent a year working for an insurance company dealing with motor accident claims and auditing panel firms of solicitors. She then went into private practice to deal with motor accident/personal injury work as a defence lawyer but on joining Shoosmiths in 1995 she switched to being a claimant lawyer. She is a member of the Association of Personal Injury Lawyers.



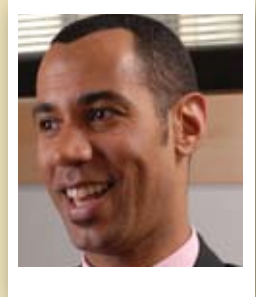
## Yogi Amin

Yogi Amin became a partner at national law firm Irwin Mitchell in 2007. He featured in *The Lawyer* Hot 100 that year, having spent the previous year handling several of the biggest cancer drug disputes and hitting national headlines. Yogi specializes in judicial review, disability/healthcare litigation and human rights law. He advised breast cancer sufferer Ann-Marie Rogers in her fight over funding for Herceptin, an expensive new drug which can prevent the life-threatening disease returning. The case went to the Court of Appeal, where they were victorious in April 2006. Later in the year Yogi took up the fight on behalf of two other cancer sufferers, seeking funding for the drug Tarceva, again winning High Court judgments on their behalf. A year earlier, in November 2005, he represented Elaine Barber who won her case for Herceptin after the intervention of the Health Secretary. North Stoke Primary Care Trust had refused the treatment. Also in November 2005, Yogi won the fight in a campaign for a Newcastle hospital consultant suffering with breast cancer to receive Herceptin treatment on the NHS. More recently Yogi represented YL, an 83-year-old Alzheimer's patient, in her battle to have her human rights recognised whilst residing at a private care home. The case was heard in the House of Lords, with the Secretary of State and various national charities intervening to support the claim.

## Richard Anyamene



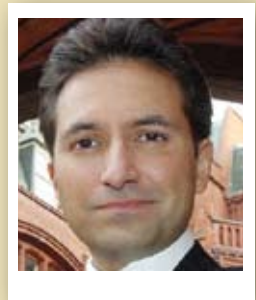
Richard Anyamene has been a partner at Lawrence Graham since 2004. He deals with all aspects of contentious or potentially contentious property work, including strategic property and risk management advice for commercial landlords, tenants and freeholders. Richard is regularly instructed in substantial one-off litigation relating to commercial and residential property disputes and his particular expertise lies in facilitating development schemes - shopping centres, industrial estates and office buildings. *Chambers and Partners* describes him as “articulate”. He advised Scottish & Newcastle in connection with the successful sale of its pub estate for £2.51 billion. Richard trained at Withers, from 1993, and joined Lawrence Graham as a solicitor in the Property Litigation team in 1998. He was appointed partner in charge of recruitment and development of trainees in 2006. He is a member of the Property Litigation Association and sits on its Law Reform Sub-Committee. He is also a regular contributor to the *Property Law Journal* and other property publications and a leading professional conference speaker.

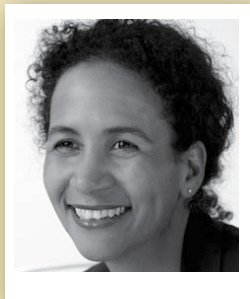


## Rafi Azim-Khan



Rafi Azim-Khan is a partner at Wragge & Co and heads its e-Business and Marketing Law Groups. *Chambers and Partners* 2006-2007 described him as “one of the most creative minds around”. Rafi has a leading reputation for e-commerce and marketing advice for major corporate, technology and brand clients including Coca-Cola, Cadbury Schweppes, Shell, Camelot, Virgin, News International and Wilkinson Sword. He has advised clients on a wide range of advertising, sales promotions, sponsorships (France '98 World Cup), lotteries, newspaper and TV promotions (UK's first £1 million prize promotions on TFI Friday and Virgin Radio). Rafi graduated from Queen Mary College, University of London. He qualified in 1993 and prior to joining Wragge & Co in 2003 was a partner at McDermott Will & Emery.





### ☪ **Ramatu Banga**

Ramatu Banga is a partner at Field Fisher Waterhouse. She trained with FFW and qualified in 1994. She took a travel sabbatical in 1997-8, and was promoted to partner in 2002. Ramatu has over 10 years experience advising well-known operators of bars and restaurants, hotels, and leisure centres, on matters ranging from acquisition and development to secondary income opportunities. Ramatu acts on both individual sites and in recent years has been involved in a number of large block disposals and acquisitions. In addition, Ramatu advises public sector bodies in a number of areas including development and regeneration schemes, asset management, and office lettings.



### ☪ **Sohail Barkatali**

Sohail Barkatali is a partner in the finance department at the City of London law firm Berwin Leighton Paisner. He is described as a “rising star” by The Legal 500 and is highly commended by Global Water Intelligence. Sohail is a commercial lawyer specializing in the energy and water sectors. He secured the lead role advising the Omani government on the £805 million-plus Barka II independent water and power production project. As a result of this, the firm was shortlisted in the *The Lawyer* Awards 2007 in the Infrastructure Team of the Year category. He has advised on a number of notable projects around the world. He is fluent in Urdu, Punjabi and Swahili. Sohail was educated at St Mary’s School in Nairobi and graduated from the London School of Economics in 1991. He gained his Masters (Commercial and Corporate Law) in 1993. He qualified in 1995, having trained at Denton Wilde Sapte and went on to become a senior solicitor with the firm from 2000 until he joined Berwin Leighton Paisner as a partner in 2003.

### **Tushar Bhate**

Tushar Bhate leads the Pensions Team as a partner at Ward Hardaway, a law firm based in Newcastle. He is regarded as a leading expert in pensions and has advised on some of the largest corporate transactions and PFI/PPP in the North of

England. *Chambers and Partners* says he has an excellent reputation and “tonnes of public sector experience”. Tushar specializes in assisting sponsoring employers and trustees of pension schemes deal with corporate transactions, major restructuring and difficult pension issues. He is a former police officer and qualified as a solicitor in 1999.

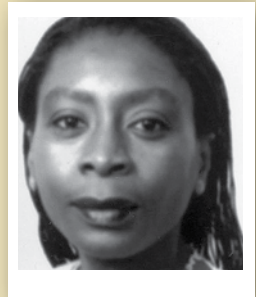
### Farmida Bi ➡

Farmida Bi is a partner in the Banking and Finance Department and head of the Islamic Finance practice at the international law firm Denton Wilde Sapte. Farmida has specialized in capital markets transactions for 14 years and has experience of English and New York law equity and debt capital markets transactions. She regularly advises both issuers and underwriters on securitisation issues.



### Mary Boakye ➡

Mary Boakye is a partner in the Banking Department at the international law firm Denton Wilde Sapte. She is one of the UK's leading lawyers on Africa matters. Previously at Allen & Overy, where she was part of the US/International Capital Markets team, she now heads the Africa Financial Markets Group at Denton Wilde Sapte and is a member of the firm's Africa Committee. She previously worked for extended periods in New York and Hong Kong and is a dual-qualified English Solicitor and New York Attorney. Mary has over 12 years experience of advising on international transactions. She has extensive experience in international finance and capital markets and has acted for a wide variety of clients, including international investment banks, international financial institutions, corporates, parastatals, and government in Europe, Asia, the United States and Africa. She has particular experience of capital markets, corporate and telecom transactions in Africa. Mary has authored and co-authored articles on various subjects, including capital markets and structured financing in Africa and opportunities for growth in emerging markets. She is also a regular speaker on a variety of subjects, including African Capital Markets, Legal Aspects of Doing Business in Africa, Multicultural

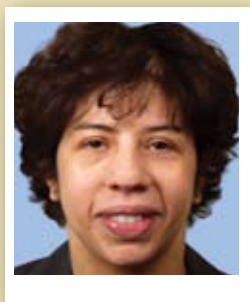


Business Negotiations as well as Perceptions of Africa. Mary serves as a member of the Technical Committee for the World Bank/AfDB All-Africa Conference on Law Justice and Development and is also a member of the Business Contact Group (Commission for Africa). She previously chaired the American Bar Association's Africa Committee and Women's Interest Network (UK). Mary is also a founder and co-chair of UNICEF(UK)'s Day of the African Child Committee.



### ☛ **Paul Buggingo**

Paul Buggingo is the international law firm Denton Wilde Sapte's Director of Africa Development and became a partner in the firm in 2006, having joined in 1998. He formulates and implements Denton's strategy for Africa, including managing the network of associate offices in Zambia, Uganda, Tanzania, Ghana, Botswana and Mauritius. Paul specializes in the energy sector advising on power projects in Africa, including in South Africa, Botswana, Lesotho, Uganda, Ghana, Southern Sudan and Kenya. He is currently part of the Denton's team advising the Government of South Africa on two power projects as well as the Government of Southern Sudan on four power projects. On oil and gas energy, Paul is part of the Denton's team advising a major Russian oil company on investments in several countries in sub-Saharan Africa.



### ☛ **Annette Byron**

Annette is a real estate partner in Freshfields Bruckhaus Deringer's London office, joining the firm in 1996. Annette was educated at Clare College, Cambridge and London School of Economics before qualifying in 1989.

Annette has a wealth of experience within the hotel and leisure real estate sector, having advised Compass Group on its £3.26bn disposal of the hotel brands they acquired through the demerger of Granada Compass; Marston's on the acquisitions of Burtonwood, English Country Inns and Jennings Brothers; and on its refinancing via a £805m securitisation involving 1,592 managed and tenanted pubs; and Carlson Restaurants Worldwide on its acquisition



together with ABN AMRO capital of 45 T.G.I. Friday's restaurants from Whitbread. Annette also has experience advising on real estate transactions within the retail leisure sector, advising William Hill on its £504m acquisition of Stanley Leisure's retail business, making William Hill Britain's leading bookmaker; CVC Capital Partners on their successful bid for the issued share capital of Debenhams plc (valued at £1.66bn) and the related financing and Selfridges Retail Ltd on a £300m proposed redevelopment of the site behind the Oxford Street store inter alia to add 100,000 sq ft of retail space for the store.

Annette also specialises in real estate transactions for Middle Eastern and North African region clients, including advising a private middle eastern investor on the acquisition of a UK luxury five star hotel and golf business as well as Dubai International Capital on the real estate aspects of the £675m acquisition of UK based Travelodge Hotels Ltd.

---

## David Carter

David Carter has been a partner at the international law firm Ashurst since 2001. He is in the private equity and buy-outs practice and specializes in corporate and commercial activities, with particular expertise in leveraged buy-outs, Mergers and Acquisitions and corporate reconstructions. In March 2007 he led a team from Ashurst advising the management of RoadChef on its £375 million sale to Delek Real Estate. In July 2006 he also led a team advising Electra Private Equity on the £98.25 million sale of Amtico. David graduated from Warwick University.

---

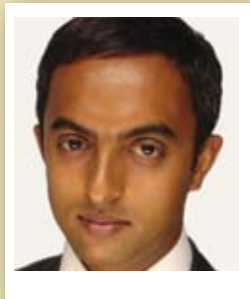
## Angela Cha

Angela Cha is a partner in the Outsourcing, Technology and Commercial Group at Pinsent Masons, an international law firm. She advises clients (particularly those in the financial services sector) on major systems integration and development projects and IT and business process outsourcing projects which includes drafting and negotiating contracts for the clients' project. She has worked with clients such as Aviva, Alliance & Leicester, Bank of Ireland and HSBC

in relation to group strategic outsourcing projects. Angela graduated from Nottingham Trent University in 1985. She joined Pinsent Masons in 1990 and became a partner in 1999.

### Rabinder Chaggar

Rabinder Chaggar is a partner in the Real Estate Department of Lawrence Graham. He is experienced in the acquisition, funding, leasing, management and onwards sales of all types of real estate. Rabinder also has extensive experience in development work and his clients include: J Sainsbury plc, Arcadia plc, Homebase Limited and Whitbread Group plc. He is a member of the British Council of Shopping Centres. Rabinder trained at Muscatt, Walker and Co from 1983-85, joined Philip Hodges and Co as an assistant solicitor until 1987, then Forsyte Saunder Kerman, where he became a partner in 1987. He joined Lawrence Graham as a partner in 1998.



### ☛ Arnondo Chakrabarti

Arnondo Chakrabarti has been a partner since 2006 in the Banking and Finance Litigation Group at Allen & Overy, a Magic circle law firm and one of the world's top six law firms. Arnondo who did his training at Allen & Overy, qualified as a solicitor in 1997. He then re-qualified and practised as a barrister at Matrix Chambers between 2000-2002. He returned to Allen & Overy in 2002. Arnondo advises investment banks and other financial institutions on a wide range of contentious matters, including regulatory, criminal and internal investigations, disputes relating to complex financial products, fund management disputes and risk management. He also advises on public law. In July 2004 Arnondo was one of the litigation associates in the Allen & Overy team which triumphed in a Jamaica death row case. A man facing a mandatory death penalty saw his sentence overturned as a result of pro bono work by them. The Privy Council in London declared the mandatory death sentence in Jamaica unconstitutional.

## Edward Chan



Edward Chan became a partner at Linklaters, the world's second largest law firm, in 2006. His practice covers a broad range of banking, structured finance, capital markets and derivatives transactions. Edward obtained a first-class honours degree in Philosophy, Politics and Economics from Balliol College, Oxford and also a Masters degree in Corporate and Commercial Law from the London School of Economics. He trained at another Magic circle law firm, Slaughter and May, before joining Linklaters as a managing associate in 2003.



## Heather Chandler

Heather Chandler is a partner at the Milton Keynes office of Shoosmiths, a national law firm. She focuses on pensions advisory work, dealing with trustee and commercial clients advising on legislative compliance and best practice. She also covers insolvency issues as they apply to pension schemes, scheme mergers, closures and wind up. She is responsible for spearheading the roll out of advice to clients on the main changes of relevance to them under the Pensions Act 2004. Her experience includes advising a number of corporate organisations, including venture capitalists and contractors or Government authorities, on outsourcings. Heather read Economics at Surrey University and spent a year working for the Bank of England in its Trade Figures Department. She began her career as a qualified solicitor at Edge Ellison (now Hammonds) in Birmingham, having trained in London. She moved back to London to help set up Edge Ellison's pensions practice there. In 1999 she had joined Ashurst Morris Crisp (now Ashurst).



### ☉ Suki Chhokar

Suki Chhokar has been a partner at the national firm Irwin Mitchell since 2005. He is based in Birmingham and his specialist area is international travel litigation. Suki's team handles in excess of 2,000 clients with various multi-party actions against major UK tour operators. A number of the group illness actions are amongst the largest of their kind ever pursued in the UK and have resulted in multi-million pound settlements. The claims are based in negligence, breach of contract, misrepresentation and breach of statutory duty, which regularly involves making new law or pushing the boundaries of existing law. After graduating from the University of Leicester, Suki trained with Harris and Cartwright in Berkshire, qualified in 1999, became an associate at Irwin Mitchell 2001 and partner in 2005.



### ☉ Baljit Chohan

Baljit Chohan is a partner at Wragge & Co since 1997. He is the technology corporate partner responsible for the firm's sponsorship of Connect Midlands, an initiative focused on promoting technology businesses. Baljit is based at the Birmingham office and specializes in corporate law with a particular emphasis on the IT sector. Baljit regularly acts as lead lawyer for many businesses in the IT sector on national and international acquisitions, disposals and flotations. *Chambers and Partners* 2001-2002 described him as "a shining light" for his Mergers and Acquisitions work. Baljit graduated from Essex University in 1988. He trained at Pinsent & Co (now Pinsent & Mason) and qualified in 1991. He joined Edge Ellison in 1992 and became a partner there in 1997. He was the author of Wragge & Co's brochures entitled *The Company Secretary*, *Re-registering as a Public Limited Company*, *Incorporation of a Business*, *Registering a Branch and Place of Business in the UK* and *Corporate Trading Names*. Baljit joined Wragge & Co in August 2001.



# BE LOCAL—GO GLOBAL



INVESTOR IN PEOPLE

At DLA Piper our people reflect the diversity of our communities and our global marketplace. Our efforts to understand, value and incorporate differences are at the heart of our culture. The firm's success reflects our partnership with a diverse client base in a diverse number of locations, delivering a full range of top quality legal solutions.

We consider the firm to be defined by its people – they are key to our global identity. Our brand is based on relationships and our people define these relationships. We recruit, develop and promote fully diverse teams of people who understand and share these principles.

We seek to encourage applications from a fully diverse background and are proud to support BLD.

Visit our website to find out more: [www.dlapiper.com](http://www.dlapiper.com)



### ☛ Philip Chong

Philip Chong has been a partner in the Litigation and Arbitration Group at DLA Piper – one of the largest law firms in the world – since December 2006. He was a former partner at Denton Wilde Sapte. Philip specializes in the resolution of complex commercial disputes. He has acted for clients across a wide spectrum of businesses, including transport, infrastructure, logistics, energy, media, technology, telecommunications and sports. He is experienced in managing large-scale disputes across multiple jurisdictions and has dealt with several disputes involving competition law issues. In 2006, Philip led the team at Denton Wilde Sapte representing the Swiss-based AllSeas Group in a major dispute against Sembawang shipyard in Singapore over the conversion of the pipe-laying vessel *Solitaire*. That arbitration, one of the largest in London, reached a successful conclusion with a payment of €350 million to AllSeas. Philip is the co-author of *Transnational Litigation: A Practitioner's Guide*, which gives a country-by-country analysis of cross-border disputes.



### ☛ Robin Dabydeen

Robin Dabydeen has been a partner at Wedlake Bell, a London law firm, since 2005. He is head of the Corporate Tax team and advises on all aspects of tax, both direct and indirect, with particular expertise in tax planning related to corporate and real estate transactions. Robin's extensive corporate experience ranges from advising on the sale and purchase of businesses to advising companies on the reorganisation of their businesses, with expertise on the structuring of management buy-out transactions. He trained at Allen & Overy, qualifying in 1996. He was at Hammonds between 1998 and 2002 and joined Wedlake Bell in 2002.



## Yetunde Dania

Yetunde Dania is a partner in the Social Housing Department at Cobbetts, the law firm with offices in Birmingham, Leeds, London and Manchester. She is based in the Birmingham office and specializes in all aspects of private and social housing management. Yetunde's areas of expertise include anti-social behaviour remedies, unlawful eviction claims, possession proceedings, the drafting of tenancy agreements, delivering training, private landlord and tenant and general housing management issues. Yetunde has also given up a lot of her spare time to help Birmingham-based African Caribbean and black ethnic minority (BME) law students. She has been mentoring students as part of a scheme – set up to help keep local legal talent in the Midlands – run by the College of Law. Yetunde obtained her Masters in Human Rights and Civil Liberties from Leicester University and then read law at De Montfort University, Leicester. She qualified as a solicitor in 1996.

---

## Satpaul Dard

Satpaul Dard has been a partner at Shoosmiths, a national law firm since May 2006. He specializes in providing commercial real estate advice to property occupiers and investors, with a particular emphasis and focus on the retail sector. He has considerable experience in large scale acquisition, disposal and management programmes for national retail occupiers and investors. Satpaul has a broad and detailed range of experience in all aspects of non-contentious commercial property, landlord and tenant and portfolio management work. He has been involved in delivering full service real estate advice to retailers, other property occupiers, investors and specialist property finance institutions. Satpaul qualified in 1998. After spending several years in the City, the latter part with Denton Wilde Sapte, he joined Shoosmiths in September 2004 as an associate solicitor.



### ☛ Cecily Davis

Cecily Davis has been a partner at DLA Piper – one of the largest law firms in the world – since November 2006. She is in the Construction and Engineering Group at the London office. Cecily specializes in non-contentious construction and infrastructure procurement. She has acted for the public sector, developers, employers and funders and contractors. She has been acknowledged as a leader in her field by The Legal 500 and is a member of the Society of Construction Law. She has been advising the developer of what will be Europe's tallest building on construction-related issues. Cecily is a frequent speaker on construction law and practice and is regularly asked by the media to comment on issues relevant to that sector.



### ☛ Ranjit Dhindsa

Ranjit Dhindsa became a partner within the UK Litigation Group at the international law firm Reed Smith in 2006. Her areas of work involve advising employers on all aspects of UK employment law. She has expertise in advising on strategic action employers should take to avoid or minimise the risk of litigation, business reorganisations and redundancy; unfair/constructive and wrongful dismissal claims. Ranjit handles all aspects of discrimination law, including race, sex, disability, religion and sexual orientation. Her career began with Shoosmiths in 1998 and she left to join Eversheds in 2001. She joined Reed Smith in 2004.



### ☛ Sanjeev Dhuna

Sanjeev Dhuna has been a global banking partner since 2005 at Allen & Overy, a Magic circle law firm and one of the world's top six law firms. Sanjeev, who joined Allen & Overy in 1995, specializes in structured finance, including leverage finance, general syndications, real estate finance, fund investment schemes, capital market structures and investment grade financings. He has also been involved in some of the most significant cases, including Chelsfield plc, Green Property plc and Haslemere NV. *Chambers and Partners* rates him as London (up and coming) in Banking &



Finance: High-end Acquisition Finance. In December 2006, Sanjeev led an Allen & Overy team advising the Bank of Scotland, as arranger of the £88 million senior debt facilities, for the management buy-out of the well-known High Street coffee chain Cafe Nero Group plc by Rome Bidco Limited.

### Fahad Doha ➡

Fahad Doha has been a partner in the Project Group since 2007 at Allen & Overy, a Magic circle law firm and one of the world's top six law firms. Fahad has significant international and domestic project finance experience and has specialist knowledge of oil and gas projects. Fahad has also negotiated numerous upstream concessions, LNG liquefaction, supply and regas terminal agreements, as well as pipeline and inter-connector agreements.



### Rustam Dubash ➡

Rustam Dubash is a partner at Penningtons Solicitors LLP, the London and South of England-based law firm with international units focusing on North America, India, Italy and South Africa. Rustam is head of the India Unit. He is also in the Dispute Resolution Group within the Business Services Division. Rustam's areas of specialisation include retail banking and insolvency, commercial dispute resolution, cross border litigation and international arbitration. He qualified in 1984 with Waltons & Morse. In 1987 he left to join Gamlens, which merged with Penningtons, in 1990. He became a partner in 1998.



### Alicia Foo

Alicia Foo is a property litigation partner at Pinsent Masons, an international law firm. Alicia is part of Pinsent Masons national Property Litigation team and heads up the team in Birmingham. She specializes in all aspects of property litigation, particularly landlord and tenant disputes and portfolio management work, acting for both landlords and tenants. She also has a particular interest and expertise in property-related telecommunications disputes. *Chambers*

*and Partners* describes her as carving out a reputation for being a “tough cookie” and clients are “happy to parachute her into any difficult situation” knowing that she will “stand her ground”. Her reported cases range from property professional negligence disputes, break clauses, authorised guarantee agreements in a business lease renewal context to landlord’s unreasonable withholding of consent. Alicia graduated from the University of Southampton and was at Denton Wilde Sapte between 1990 and 2006. She joined Pinsent Masons as a partner in February 2007.



### ☛ Sunil Gadhia

Sunil Gadhia is the Chief Executive Officer of the international law firm Stephenson Harwood and a commercial litigation partner. He has been involved in numerous complex and high-profile disputes in a range of industries, including advertising, agriculture, banking and capital markets, engineering, professional services and technology. He also has experience in all forms of dispute resolution, including arbitration, litigation and mediation. Sunil sits on the Council of the Advertising Standards Authority and has also been a non-executive director of The Law Society Trustees Limited. In 2006 he was awarded Successful Solicitor of the Year by the Society of Asian Lawyers. Sunil’s pro bono work includes serving on the Legal Services Committee of the RCJ Advice Bureau at the Royal Courts of Justice and providing pro bono legal services at Camden Law Centre.



### ☛ Vinay Ganga

Vinay Ganga has been a partner at the international law firm Stephenson Harwood since 2007. He is a former partner at Reed Smith. Vinay specializes in private equity and project finance for Indian and Chinese clients. He is also the co-founder and Managing Director/Chief Legal Counsel of Origo Sino-India Plc (Origo), a private equity investment and corporate finance consulting company which invests mainly in profitable and growing private companies in India and China. Vinay has more than 10 years experience representing Fortune 500 companies, small to mid-market

companies and financial institutions in the United Kingdom, Europe, the United States and both India and China on a variety of corporate finance and project finance matters. He has also represented a number of foreign companies on private and public equity fund raisings and listings in the United States and the United Kingdom, including the first ever dual listing of a Chinese company on the AMEX and AIM exchanges.

### Kuljit Ghata-Aura

Kuljit Ghata-Aura is a partner at Eversheds, an international law firm. Kuljit is based in the firm's corporate practice, specialising in Mergers and Acquisitions (both public and private), private equity, joint ventures and listed company transactions. In July 2007 Kuljit, together with corporate partner Glynne Stanfield, lead a joint Eversheds London and Cambridge team advising on the IPO of leading retail automation and logistics company SDI Group plc. The company had listed on the AIM market of the London Stock Exchange plc with a market capitalisation of approximately £52 million. Kuljit is based at Eversheds London office and became a partner in 2007.

### Trevor Goode



Trevor Goode is a partner at the City of London law firm Berwin Leighton Paisner. He advises a number of local authorities and developers on a wide range of development projects, including infrastructure, PFI, housing, retail, leisure, new settlements and town centre redevelopment and urban regeneration. Trevor is a member of the British Urban Regeneration Association and the British Council of Shopping Centres. He has advised Tesco on a number of store proposals, including the Tesco Extra at Coventry City FC's new stadium complex. Trevor provided planning and compulsory purchase advice to Liverpool City Council and Grosvenor Limited in respect of the scheme to redevelop Liverpool City Centre, which is now known as Liverpool One. He is currently advising on a new settlement in Didcot and on a scheme to redevelop Stockport Town Centre.





### 🕒 **Madhavi Gosavi**

Madhavi Gosavi has been a partner since 2005 at Norton Rose, an international law firm. She advises financial institutions and sponsors on structuring and financing complex infrastructure projects. Madhavi also regularly advises on Public Private Partnership projects, with a particular focus on transportation projects, including roads and rail. She was educated in Pune, India and graduated in Socio-Legal Studies from the University of Pune in 1990. She was admitted as an advocate in India in 1992 and obtained her Masters at the University of Nottingham in 1993. Madhavi trained at Denton Wilde Sapte and qualified in 1996, before joining Norton Rose the following year.

### **Harmajinder Hayre**

Harmajinder Hayre is a partner at Beachcroft - one of the largest national law firms in the UK. The firm has offices in Birmingham, Bristol, Leeds, Manchester, Winchester and London. Harmajinder, who has been a partner since 2004 is based at the Leeds office and specializes in Employment Law, particularly large scale restructurings, outsourcing/TUPE, industrial action, discrimination and data protection issues. *Chambers and Partners* said of him: "Heading the industrial relations group nationally is the 'very good, always available and client-focused' Harmajinder Hayre, whose specialism in industrial action, national works council and trade union disputes helped ward off a strike for a UK food manufacturing company." He has carried out both contentious and non-contentious employment work on behalf of public liability companies, privately-owned companies and senior executives. In addition, he has appeared as an advocate in the English, Scottish and Northern Ireland Employment Tribunals. Harmajinder regularly delivers internal and external training events. He has spoken at events organised by the CIPD, REC Forum, ACAS and the CBI.

Meena Odura did a vacation scheme at Linklaters.  
You can read about her experiences on our website.



# 'So

# what's it really like?'



How is it, such a simple question can so often be avoided by employers? It's the one thing you probably want to ask and definitely need to know. On our website we've included various features that are designed to give an honest flavour of Linklaters. There's really no substitute for the kind of exposure you get on a vacation scheme or by meeting people at campus events, but we've done our best to provide insights and information that come a close second. We hope you'll visit soon.

What do you need to know?

[www.linklaters.com/careers/ukgrads](http://www.linklaters.com/careers/ukgrads)

Linklaters LLP

# Linklaters

## Anne Hoe

Anne Hoe has been a partner at Linklaters, the world's second largest law firm, since 2002. She specializes in structured finance with particular expertise in utility financings. She obtained a Bachelor of Medicine and Bachelor of Surgery from the Royal Free Hospital School of Medicine in London and her Diploma in Law from City University London. She trained with Slaughter and May between 1991 and 2000, when she became an assistant solicitor with Linklaters. Anne led the Linklaters team on the Network Rail £20 Billion long-term finance platform.



## Farah Ispahani

Farah Ispahani was made a partner at the Magic circle law firm Freshfields Bruckhaus Deringer in 1996. She specializes in general corporate advice, public and private Mergers and Acquisitions and private equity work. Her major clients include Compass, WS Atkins and the New Look Group. Farah's recent work has included acting for Allianz Capital Partners on the £775 million acquisition of Four Seasons Health Care from Alchemy Partners. She studied law at the School of Oriental and African Studies and then at the College of Law in Guildford. Farah joined Freshfields in 1986. In 1990 she left the firm to work in Australia and returned in 1993. She spent the summer of 2004 on secondment to Morgan Stanley in Canary Wharf.



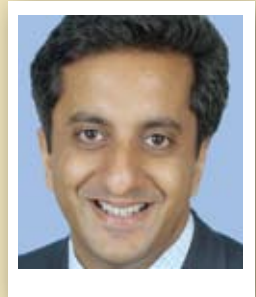
## Hanh Jelf

Hanh Jelf is a partner in the Corporate Group at Pinsent Masons, an international law firm. She specializes in corporate finance work, including advising companies and their institutional advisers on flotations and further issues as well as advising both listed and unlisted companies on acquisitions and disposals. Since joining the firm she has acted on a number of transactions for public and private bodies. She has also acted for nominated advisers and brokers on various corporate finance transactions. She assisted when, in July 2007, a Pinsent Masons team advised Capital Management & Investment plc, an AIM listed client, on its

proposed \$40 million investment as part of a consortium that had made a bid for Metromedia International Group, a US corporation listed on the Pink Sheets. Hanh graduated from the University of East Anglia in 1995. She joined Pinsent Masons in 2000 from Mills & Reeve.

### Rajat Jindal ➤

Rajat Jindal has been a partner at the at the Magic circle law firm Freshfields Bruckhaus Deringer since 1994. He works on a broad range of commercial disputes with particular emphasis on arbitration, insolvency, financial services and employment. Rajat was based at Freshfields's Hong Kong office from 1996 until 2004, where his post was head of the Asian dispute resolution practice. He was also a member of the Hong Kong Securities and Futures Appeal Tribunal. Rajat, who was educated at Downing College, Cambridge, is a keen photographer and staged a photographic exhibition in 2002.



### Seema Jobanputra

Seema Jobanputra is a partner at Weightmans, a national law firm with offices in Birmingham, Leicester, Liverpool, London and Manchester. Seema specializes in high value defendant employers' and public liability personal injury claims. She qualified as a solicitor in 1997 and joined Weightmans in 2001 from a claimant firm where she was responsible for overseeing and concluding a substantial multi-party action. She was made partner in 2006 and has the responsibility for overseeing claims from a major insurer. Her reported cases include *Thorp v John Lewis* (2003).

### Smeetesh Kakkad

Smeetesh Kakkad has been a partner at the London office of Salans – an international law firm – since 2000. He specializes in commercial litigation and arbitration, with particular emphasis on banking, insurance, international trade, insolvency, IP/IT and fraud disputes. He acted as co-counsel for a US telecoms company in litigation in Guernsey

against a former director. He was then the lead Counsel in a related arbitration in London. This assignment led to Smeetesh and his team being short-listed for the Litigation Team of the Year at *The Lawyer* awards. Smeetesh graduated in 1993 and qualified as a solicitor in 1997.

---

### Sunil Kakkad

Sunil Kakkad is a corporate partner and head of the India Group at Lawrence Graham. Sunil regularly advises Indian companies on mergers, acquisitions and disposals. The Corporate Department has focused on attracting work from Indian corporations acquiring or investing outside the country, and also from non-Indian companies investing in India. Sunil has also advised on AIM flotations, including Great Eastern Energy's £105 million listing, the Careforce Group and Dewhurst. His experience also includes advising Satyam, the global IT solutions provider, on its \$39 million acquisition of Citisoft plc in the UK and US. Sunil, who speaks Gujarati and Hindi, became a partner at Lawrence Graham in 2000.

---

### Nish Kanwar

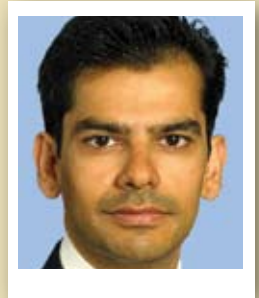
Nish Kanwar is an associate partner in the Commercial Litigation Department at Davies Arnold Cooper, an international law firm with offices in the UK, Spain and Latin America. Nish is based at the London office and specializes in trans-jurisdictional travel, sports and personal injury claims. He is ranked in *Chambers and Partners* as "Best in the UK (Up and coming)". It describes him as "celebrated for his abilities in brilliantly co-ordinating and managing all the work involved in a case." He has worked to recover damages for claimants and legal expenses for insurance companies in multiple jurisdictions for more than a decade. Recent highlights include handling a mass food poisoning claim for Estrella in Madrid and acting for a Lloyd's personal accident travel syndicate following the collapse of its cover-holder in Iceland. Nish's clients include Sandals, by whom he is retained in respect of all UK quality and injury complaints, having delivered liability seminars at most of their resorts.



He joined Davies Arnold Cooper as an associate partner in 2004. He had previously been a partner at the City office of Davies Lavery, a UK insurance law firm.

### Sundeep Kapila ➡

Sundeep Kapila became a partner at the Magic circle law firm Freshfields Bruckhaus Deringer in 1999 and is based in its Corporate Department. He specializes in public and private Mergers and Acquisitions, demergers and joint ventures. He has advised the Spanish construction and infrastructure Ferrovial consortium on its takeover of British airports group BAA, Akzo Nobel on its agreed £1.8 billion bid for Courtaulds and Alliance & Leicester on its proposed £11.4 billion merger with the Bank of Ireland. Sundeep was educated at Oxford University.



### Raj Karia

Raj Karia has been a partner since 2000 at Norton Rose, an international law firm. He is a corporate finance lawyer and specializes in international securities transactions, cross-border Mergers and Acquisitions and restructurings. He regularly represents companies, investment banks and private equity funds. Raj joined Norton Rose's London practice in 1991 and qualified as a solicitor in 1993. He spent a year working for an investment bank before returning to resume his legal career in 1995 and became a partner in 2000. Raj was educated at Gateway College, Leicester and graduated from Brunel University in 1990.

### Pranai Karia

Pranai Karia is a partner in the Real Estate Practice Group at CMS Cameron McKenna, an international law firm. He has experience in real estate, investment, development and insolvency. The real estate that Pranai has advised on include the disposal of 68 Lombard Street for over £24 million; acquisition of a portfolio of retail parks in Chippenham, Harwich, and Sudbury; disposal of a portfolio of five-a-side football pitches for Ernst & Young out of administration; and

disposal of nightclubs for Price Waterhouse Cooper (PwC) out of administration. Pranai trained with Witham Weld and qualified in 1989. He joined CMS Cameron McKenna soon afterwards and became a partner in 1998. Pranai is a subscriber member of the Association of Business Recovery Professionals.

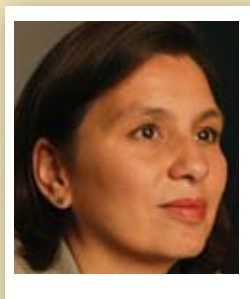
### Wasim Khan

Wasim Khan has been a partner at Norton Rose – an international law firm – since 2006. He is a commercial property lawyer and has the full range of commercial property transactions, including those arising from projects, asset sales and purchases, Mergers and Acquisitions, flotations, property investments and secured lending. He has considerable experience of major projects and Private Finance Initiative/Public Private Partnership transactions. Wasim joined Norton Rose's Commercial Property Department in 1999.



### ☪ Raj Kulasingam

Raj Kulasingam is a partner in the Energy and Infrastructure Department at the international law firm Denton Wilde Sapte. He has worked on a wide variety of projects, including the electricity, waste, water, oil and gas sectors, and has substantial experience of concession agreements and related regulatory work. He has particular expertise of PFI/PPP projects and projects in the environmental sector (water, wastewater and waste).



### ☪ Sarah Lee

Sarah Lee has been a partner at Slaughter and May, the Magic circle law firm since 1999, having joined the firm in May 1993. Her practice area is dispute resolution and she advises a number of financial and commercial organisations on a diverse range of commercial disputes, usually of a substantial complex nature. In 2007 she acted for Semptra Metals Limited in successfully defeating an appeal by HM Revenue and Customs in the House of

Lords involving Advanced Corporation Tax. In 2006 she also acted for Deutsche Morgan Grenfell in its successful appeal to the House of Lords in a claim against HM Revenue and Customs. Sarah was one of *The Lawyer* Hot 100 in 2005 and is also an accredited Centre for Effective Dispute Resolution mediator.

### Miranda Leung ➞

Miranda Leung is a partner at Slaughter and May, a Magic circle law firm. She has a broad financing practice which covers acquisition and bid financing, restructuring, securitisation, structured financing and capital markets transactions. Miranda practised in the Hong Kong office between 1993 and 1997, focusing on international public offering, acquisitions and disposals, general banking and project finance. Since returning to the London office she has been focusing on her financing practice and has been involved in a number of major domestic and cross-border financing transactions, including acting for Lehman Brothers in relation to the financing of the acquisition of Le Meridien hotel group by Nomura, the restructuring of Drax power station, the monetisation of \$3.75 billion BP shares and various debt issues, structured financing and derivatives transactions entered into by corporations, banks and insurance companies. Miranda joined Slaughter and May in 1990 and became a partner in 2001.



### George Lubega

George Lubega is a partner at Pinsent Masons, an international law firm. He is based in the Dispute Resolution and Litigation Group and specializes in commercial litigation, arbitration and dispute resolution. He regularly acts for corporate and individual clients and Government departments. George is a Solicitor Advocate (Higher Courts - Civil Proceedings) and a Member of the Chartered Institute of Arbitrators. He graduated from Cambridge University in 1991 with an MA Law (Hons) and gained a first-class honours in his Solicitors' Final from the College of Law, Guildford the following year. He trained at Gouldens (now Jones Day) and qualified in 1994. In 1995



he was admitted to the Bar of the State of New York. George joined the Sydney office of Mallesons Stephen Jaques in 2000 and returned to the UK the following year to join Freshfields Bruckhaus Deringer. He moved to Pinsent Masons as a senior associate in 2003 and became a partner in 2005.

### 🕒 **Sushma MacGeoch**

Sushma MacGeoch is a partner at Kennedys, an international law firm specialising in insurance-driven litigation. Sushma defends professional indemnity claims involving solicitors, accountants, insurance brokers, valuers, architects and engineers. She also advises on and brings/defends international arbitrations. Her clients are international and UK-based insurers and construction companies. Sushma qualified as a solicitor in 1993. She is Law Representative on the Insurance Institute of London's Committee of Representatives and a member of the Forum of Insurance Lawyers. She is a regular contributor of articles in insurance, construction and legal journals and lectures on professional indemnity and international arbitration issues.

### **Ravinder Mahal**

Ravinder Mahal is an employment specialist heading the team at Wedlake Bell, a London law firm. Ravinder has been a partner since 2006 and advises on all aspects of employment law, both contentious and non-contentious. He works for both public and private sector organisations with particular expertise in the outsourcing, retail, IT and charity industries. He is the general editor of *Tolley's Employment Law*, editor of the Employee Participation chapters of *Tolley's Employment and Personnel Procedures* manual and has been commissioned to edit the Religious and Age Discrimination chapters of *Tolley's Employment Law*. Ravinder has developed a number of industry/client specific training programmes and has set up industry specific Forums dealing with new legislation and responses to Government consultation papers. He speaks Spanish and Punjabi and qualified as a solicitor in 1994, having trained at Nabarro Nathanson before joining Wedlake Bell in June 2004.

## Indraj Mangat

Indraj Mangat is a partner at Eversheds, an international law firm. Indraj joined Eversheds in 1996 and is now the head of the banking team in London. He specializes in asset finance, project finance and acquisition finance. Indraj is a member of the LMA Drafting Committee. He graduated from the University of East Anglia, gaining honours in Economics. Indraj trained at Watson Farley & Williams and qualified as a solicitor in 1989. He speaks Punjabi.

## Rajindh Mangat

Rajindh Mangat has been a partner at Norton Rose – an international law firm – since 2001. He is a global real estate lawyer. The firm's real estate team was named Team of the Year at *The Lawyer* Awards in 2005. Rajindh's main areas of general practice include landlord and tenant work, disposals and acquisitions, development agreements, retail pre-lettings and aspects of corporate related transactions. Rajindh has acted for major retailers and developers on various aspects of commercial property and development work. He currently acts for local and public sector bodies in relation to development work and regeneration projects for town centres and individual schemes as well as estate and management related property matters and sales and acquisitions. Rajindh qualified as a solicitor in 1992, having read history at London University. He did his Articles at Slaughter and May and qualified in 1990. He was with Ashurst from 1996 until moving to Norton Rose in 2001.

## Moni Mannings



Moni Mannings is a partner at Olswang and is the head of the Finance Group. She trained at Clifford Chance and worked in its Banking and Securities Group for nine years. Prior to joining Olswang in 2000 she was a partner with a leading law firm in the United States. Moni has specialized in banking and finance work for 20 years and her practice encompasses all areas of domestic and international banking law. In recent years her work has focused on the debt and other banking aspects of leveraged buy-outs, other private



equity financing, acquisitions, property and tax structured finance as well as on corporate debt restructurings. Her clients range from domestic and international banks to corporate and institutional borrowers, and structured finance providers.

---

### **Thelma Marshall**

Thelma Marshall is a real estate partner with Lawrence Graham. She is experienced in all types of real estate transactions, with the main emphasis on real estate development and investment acting for institutional clients, local authorities and developers. Thelma also acts for various groups/trusts and syndicates in tax-driven transactions, secured lending, joint ventures and consortium arrangements, property aspects of corporate acquisitions and disposals and public and private sector initiatives within commercial property. She advised Scottish Mutual Assurance on the sale of a property in Chelsea to Allied Irish Bank for £55 million and on the lease of a modern mixed office and retail building on The Strand. Other clients include Zurich Assurance, Halifax and the Bank of Scotland. Thelma is a member of the London Chamber of Commerce and Industry. She spent nine years at McGrigor Donald (London office) before joining Lawrence Graham as a partner in 2002.

---

### **Tak Matsuda**

Tak Matsuda became a partner at Norton Rose – an international law firm – in 2005. He is a capital markets lawyer and has a broad range of expertise in debt and equity capital markets, including stand alone issues, medium term note programmes, convertible bonds, repackagings, structured funds and derivative securities. Tak also has particular expertise advising on retail structured products and emerging market issues and has acted for a number of the top tier banks, including HSBC, Barclays Capital and ING. Japanese-born Tak, who originally qualified as a doctor, is a former associate at Allen and Overy.

## Sandeep Maudgil



Sandeep Maudgil is a partner at Slaughter and May, a Magic circle law firm. He advises on a wide range of pensions and employment-related matters, both as they affect Mergers and Acquisitions and in the day-to-day context. In particular, Sandeep has extensive experience advising employers and trustees of a wide range of occupational pension schemes, including management of the issues arising from scheme funding deficits and recent changes in pensions legislation, and implementing the transition to more affordable career average or defined contribution benefit arrangements. His pensions work has included advising Standard Life in the demutualisation of The Standard Life Assurance Company and the flotation of Standard Life plc on the London Stock Exchange; Royal Mail on negotiations with the Government in relation to its investment in Royal Mail and Post Office Limited; Boots Group on pensions and employment aspects of its proposed disposal of Boots Healthcare International. Sandeep joined the firm in 1996 and has been a partner since 2006.



## Frank Morton



Frank Morton is a partner at Beachcroft - one of the largest national law firms in the UK with offices in Birmingham, Bristol, Leeds, Manchester, Winchester and London. Frank, who has been a partner since 2004, is based at the Bristol office and specializes in collective employment law issues, restructuring programmes, discrimination and major change issues in the UK and to multi-national companies. In April 2007 he lead a team advising MITIE on its successful tender for the cleaning services contract for the new BAA Heathrow Terminal 5. In The Legal 500 for 2006 Frank (and Alex Lock's) employment team increased its ranking as the "growing reputation of its (Beachcroft) Bristol offering continues to strengthen". Frank graduated from Kingston University in 1986. He joined Lewis Silkin as a trainee (1987-89). On qualification, he moved to Linklaters (1989-98); Bevan Ashford (1998-99); Osborne Clarke, where he became a partner in 2001 (1999-2004). He is a member of the Employment Lawyers Association and the Institute of Arbitrators.





### ◀ Habib Motani

Habib Motani is the head of Derivatives Group at Clifford Chance, the world's largest law firm. Habib's specialism is derivatives, capital markets and financial markets and he has been a partner at Clifford Chance since 1986. The firm won the Derivatives Law Firm of the Year at the Futures and Options World (FOW) awards in June 2007. The FOW awards recognise both organisations and individuals that have made a substantial contribution to the development of the global derivatives market over the past year. According to the *International Financial Law Review*, Habib, originally from Uganda, is described as "admirable" and "clearly very good" by contemporaries



### ◀ Hardeep Nahal

Hardeep Nahal read law at Trinity College, Cambridge and qualified as a solicitor with Herbert Smith in 1994. He became a solicitor advocate with higher rights of audience in 1998 and a partner in Herbert Smith in 2001. Hardeep has conducted a wide variety of complex, high-value commercial disputes (litigation in the High Court and County Court and in the Court of Appeal, arbitration and ADR) for listed and other clients. He has particular experience in the audit and accountancy sector. Hardeep is "highly recommended" for commercial litigation in Legal Experts 2005, Legal Experts 2006 and Legal Experts 2007. He is ranked as a "leading individual" for General Commercial Litigation in *Chambers and Partners* 2006, where it is said he "won praise from clients as a methodical and highly technical operator with a comprehensive grasp of complex processes", and in *Chambers and Partners* 2007, where it is said "Opponents find solicitor advocate Hardeep Nahal a refreshing change to a number of his peers: 'There's none of that needless point scoring you sometimes get between lawyers.'" Hardeep is on the Committee of the Commercial Litigators Forum and the City of London Law Society Litigation Sub Committee.



## Salim Nathoo



Salim Nathoo has been a securitisation partner since 2000 at Allen & Overy, a Magic circle law firm and one of the world's top six law firms. Salim is head of the Securitisation Group and has worked in Allen & Overy's securitisation team since 1995. Between 1998 and 2002 he established Allen & Overy's Japanese securitisation practice working from the Tokyo office. Salim has broad experience of working with a variety of asset classes utilising a wide range of structures, and regularly develops new structures to accommodate client's requirements, in particular management of a client balance sheet. He has worked on a variety of asset-backed transactions, including whole business securitisations (Unique, Mid Kent Water), residential mortgage master trusts (Northern Rock, HBOS and Abbey National), de-linked master trusts (Arkle Master Issuer, Holmes Master Issuer), synthetic RMBS transactions (Whinstone 1-2), auto finance (General Motors), commercial mortgages, structuring insurance backed transactions, pan-European trade receivables deals and he has developed new structures including innovative structures in Islamic finance (Islamic Development Bank) and unsecured consumer loans (Flint Consumer Loans No.1 Limited). In June 2007 Salim led a team from Allen & Overy which advised UBS AG, London Branch, as Series Portfolio Seller in connection with its establishment of the EuroMASTR non-conforming RMBS platform, and the debut issue of £196 million first series notes.



## Murali Neelakantan



Murali Neelakantan is a partner and head of the India Group at the international law firm Ashurst since September 2007. He was previously a partner at the US law firm Arnold & Porter. Murali qualified as an advocate in Mumbai, India and is one of the few partners in an international law firm in London qualified to practise Indian law. He is recommended by the The Legal 500 and is the subject of a biographical record in the *Who's Who in the World*, 2007. He is frequently quoted as an expert on Indian matters in the business press. Murali is a frequent speaker at international events and is the author of several works





including *Source Code*, *Object Code*, *The Da Vinci Code*: *The Debate on Intellectual Property Protection for Software Programs* and *A Passage to India: Investing in India through Mauritius and Cyprus*.

### ☛ Segun Osuntokun

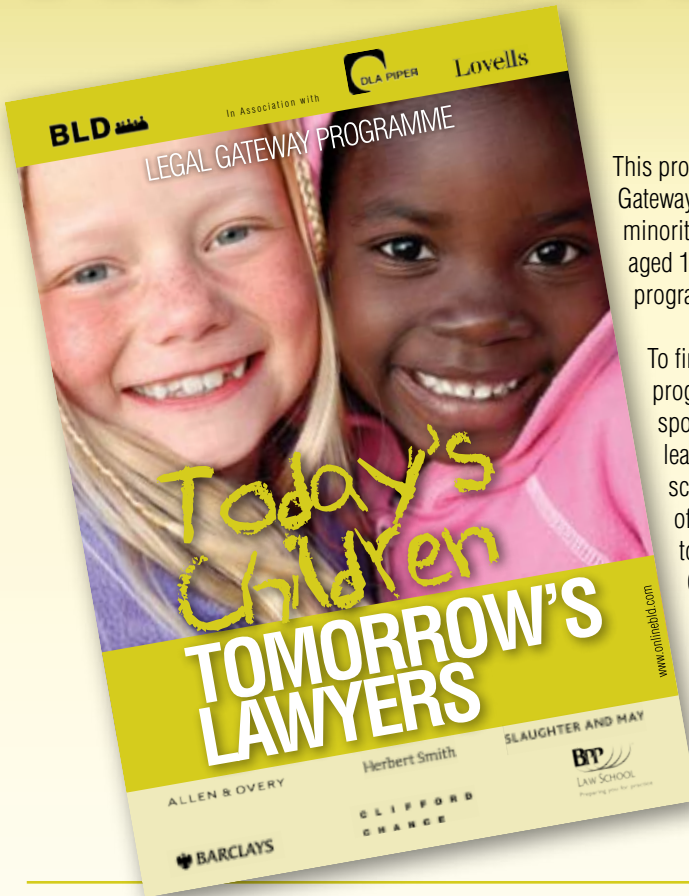
Segun Osuntokun has been a partner in the Litigation and Regulatory Group at DLA Piper – one of the largest law firms in the world – since 2003. Segun, who read Economics at Queen Mary, London and Law at Balliol College, Oxford, trained at Wilde Sapte (as it then was) and joined DLA Piper in 1999. Segun focuses on resolving complex commercial disputes by litigation, arbitration and alternative forms of dispute resolution. He regularly advises banks and other financial institutions on fraud claims and other claims for recovery of assets and enforcement of security. He is a founding member of DLA Piper's Africa group and plays a leading role in the development of the firm's practice in sub-Saharan Africa.



### ☛ Raj Parker

Raj Parker has been a partner at the at the Magic circle law firm Freshfields Bruckhaus Deringer since 1993 He is the dispute resolution partner and co-head of its financial institutions group at its London office. Raj's specialism is general commercial dispute resolution, with particular experience in the insurance and reinsurance, public and administrative and sports areas. His clients include insureds and reinsureds such as Anglo American, Reuters, MFI, Deutsche Bank and Caledonian Bank and acting for the Football Association in advisory and contentious work, including the Hillsborough proceedings - the litigation which established the Premier League - and various disciplinary hearings and participating in working parties which reported on financial irregularities, betting and compliance issues. Raj is first rank of 'leading individuals' in *Chambers UK 2006* for general commercial litigation and for insurance and reinsurance: 'Raj Parker leads the insurance/reinsurance group. He has impressed lawyers and clients alike with ►

# RAISING ASPIRATIONS



This programme within our Legal Gateway Scheme is targeted at ethnic minorities and disadvantaged children aged 13-17 years. However, the programme will benefit all children.

To find out more about the programme, about becoming a sponsor, to request a brochure or learn how your organisation or school can play a part in the future of today's children for their better tomorrow, please see the Legal Gateway pages on our website at **[www.onlineBLD.com](http://www.onlineBLD.com)** or email **[legalgateway@onlinebld.com](mailto:legalgateway@onlinebld.com)**

**ALLEN & OVERY**
**Herbert Smith**
**SLAUGHTER AND MAY**
**BARCLAYS**
**CLIFFORD  
CHANCE**
**BPP**  
LAW SCHOOL  
Preparing you for practice

his “shrewd judgment”...Raj Parker is “So charming, a real client man as well as an excellent brain”.’ Raj is also highly recommended in *PLC’s Dispute Resolution 2004/5 Global Counsel Handbook* for commercial and insurance and reinsurance disputes. He is Centre for Dispute Resolution (CEDR) accredited and a solicitor-advocate and an arbitrator at the Court of Arbitration for Sport in Lausanne. He is one of the very few solicitor recorder for the Crown Court

### Kavita Patel

Kavita Patel is a partner in the Corporate Finance team at Martineau Johnson, a law firm with offices in Birmingham and London. She specializes in private equity and corporate finance transactions. Kavita is a specialist in Venture Capital Trust (VCT) investment and Enterprise Investment Schemes (EIS) at Martineau Johnson. She was short-listed in the Birmingham Young Professional of the Year in 2007. In March 2007 she played a key role in connection with the finance for a pioneering plastics recycling plant in Dagenham, Essex – the first UK recycling plant of its kind to produce recycled material suitable for food packaging. Kavita has been a partner at the firm since 2006.

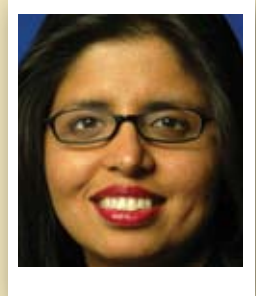
### Anand Raghupati

Anand Raghupati is a partner at DWF, the North West of England law firm with offices in Leeds, Liverpool, Manchester and Preston, which merged with insurance specialists Ricksons in January 2007. Anand is based at the Preston office and has been a partner since 2007. He specializes in defending employers’ liability and motor claims, including serious road traffic prosecutions.

## Kamal Rahman



Kamal Rahman is an immigration partner at Mishcon de Reya, the City law firm. She is a specialist in UK immigration law and in 2006 she was appointed by the Government to the new migration Employer Taskforce. Kamal's work covers work permits, investor and business applications, rights under European Law and family-related immigration. She also advises on immigration issues relating to inward-investment to the UK from outside the EU. Kamal also spearheads the firm's India Group, which services a wide range of corporate clients from India. She qualified in 1991 and joined Mishcon de Reya in 1995, becoming a partner in 1998. She sits on the Work Permits (UK) Sector Panel for the Information Technology and Communications sector, which determines immigration policy for information and technology-related work permits and is a member of the Immigration Law Practitioners Association. She has also contributed articles for the India press on UK immigration issues and to the immigration section of the UK Trade and Investment publication *Doing Business in the UK*.



## Jeremy Raj



Jeremy Raj is head of the Residential Property Team at Wedlake Bell, a London law firm. He advises on all aspects of residential conveyancing, with a particular emphasis on residential investment, development and funding, Landlord and Tenant work (including rights of first refusal), portfolio acquisitions and subsequent management and disposal. He currently acts for property investment companies, developers, private individuals, investment advisors and lending institutions in the residential property sector. Jeremy's recent work has included the acquisition of a portfolio of 180 mainly residential properties in the Brighton and Hove area, the acquisition and disposal of a single investment property worth £11.9 million and the acquisition and onward sales of 75 buy-to-let properties to foreign investors. He is a member of the British Property Federation, Movers & Shakers Property Club and the German-Speaking Lawyers Association. Jeremy graduated from the University of East Anglia and qualified as a solicitor in 1993. He joined Wedlake Bell in 2003 and became a partner in 2006.



### Amar Rashid

Amar Rashid is a partner in the Corporate Recovery and Insolvency Department at Pannone, the Manchester-based law firm. He specializes in both contentious and non-contentious non-bank insolvency matters and particularly in personal insolvency, partnerships and court-based corporate insolvencies and Islamic banking and finance. Amar has been involved in a number of high-profile cases and has had a number of his cases reported. His clients include accountants, insolvency practitioners and financial institutions. Amar trained at DLA Piper and qualified in 1992. He was made a partner at DLA Piper in 2001 and appointed as DLA's head of National Bankruptcy Unit. He joined Pannone as a partner in 2005.



### Yash Rupal

Yash Rupal is the Senior Tax Partner at Linklaters, the world's second largest law firm. He joined Linklaters in 1986, qualified into the tax department in 1988 and became a tax partner in 1996. During his career he has spent time working in New York and at a leading investment bank. He specialises in corporate tax. Yash acts for a wide range of UK and international clients on mergers and acquisitions, corporate restructurings, capital markets and derivatives transactions and complex structured financing transactions. He also deals with tax litigation.

### Shashi Sachdeva

Shashi Sachdeva is a partner at Penningtons, the London-based law firm with international units in North America, India, Italy and South Africa.. She specializes in divorce and financial issues between married and unmarried couples but also advises clients on the full range of family law issues, from divorce and resolving financial concerns on the breakdown of marriage to prenuptial agreements and cohabitation matters, civil partnerships, children's issues and domestic violence. Shashi is a member of the Law Society's Family Law Panel, Resolution and the Thames Valley Family Lawyers' Society. She was a former law lecturer. She joined Penningtons in 2000 and became a partner in 2006.

# Adedayo Ajibade on how personalities are important, wherever you find yourself.



**Adedayo Ajibade studied Chinese and Japanese Studies at the University of Leeds. So far he's worked in Structured Finance and Derivatives as a legal assistant; and Banking, Mainstream Corporate and the Structured Finance Group as a Trainee.**

## **A feel for personality**

My advice is this: definitely go to as many open days as you can to get a feel for the type of people that each law firm hires. Each firm has a certain 'personality' and it's important to get an idea of what each is like. After all, if you're working late in the office and you don't like the people you're with, you'll find those hours feel a whole lot longer. I chose Linklaters because of the international reach and the training. The people here are smart and at the top of their game – and some of the nicest to be around.

## **Big deals**

I started my training contract in March 2006, but I'd already spent several months in Tokyo as a Legal

Assistant before that. It was an amazing experience – I've always been fascinated by that part of the world and it was a great chance for me to use my language skills. But the highlight of my time here so far has been being sent to China for the signing and closing of a high-pressure, highly visible deal for one of our most important clients. My team comprised people from every corner of the Linklaters network, and I also put my Chinese to good use reviewing and drafting sections of the final documents. It was really hard work, but worth it. And the two days we were given to recuperate in the Mandarin Oriental in Hong Kong helped as well!

## **Work and life**

I've deliberately chosen seats that are 'transaction heavy' so sometimes I need to work days that are well beyond the 9 to 5 – it's something that I personally wanted, but it does take a while to get used to. In this environment our clients need us to stay sharp and alert, no matter what time of day it is. But if you're up for the challenge of working on some of the biggest deals and building yourself a truly high-flying international career, there's nothing like it.

## **What it feels like**

Despite the high-pressure nature of the environment, it's not as formal as I expected. People are relaxed and open, and you can form strong relationships here. People, even very senior people, don't mind you asking questions and are very generous with their time – because they recognise it's one of the best ways to help you become a great lawyer.





### Michael Salau

Michael Salau is a partner at Berryman's Luce Mawer, a national firm with offices in Birmingham, London, Leeds, Liverpool, Manchester, Southampton, Stockton-on-Tees and Dubai. Michael advises employers, major insurers, contractors, engineers and architects on construction law, practice and procedures encompassing arbitration, adjudication and mediation as well as litigation. He also provides advice on non-contentious matters such as contract drafting, consultancy appointments and amendments to standard form contracts and collateral warranties. He is a specialist in a wide range of environmental law issues instructed by consultants, waste management companies and insurers. *Chambers and Partners* quotes his clients as saying that they are attracted by his "ability to give us peace of mind on the problem" and that he has "pulled off some remarkable settlements for us". Michael is a member of the Society of Construction Law, the Technology and Construction Solicitors Association, the United Kingdom Environmental Law Association and FOIL (Forum of Insurance Lawyers).

### Ash Saluja

Ash Saluja is a financial services partner in the Commercial Department at CMS Cameron McKenna, an international law firm. He has experience in commercial and financial services, specialising in non-contentious financial services regulatory and commercial matters, including product design and distribution, regulatory structuring, UK and cross-border compliance, and the regulatory aspects of Mergers and Acquisitions. Ash advises a number of leading online securities and derivatives broker-dealers on both their UK and international operations. He obtained a first-class honours degree from the University of Manchester in 1995. Ash trained with CMS Cameron McKenna and qualified in 1998. He was assistant solicitor within the financial services team between 1998-2006 and became a partner in 2006.



## Pawan Sharma ➡

Pawan Sharma is a partner at international law firm Stephenson Harwood specialising in international corporate finance and corporate transactions. He primarily acts for family offices/investment/hedge funds, corporate finance advisory firms, and individual companies in respect of private and public equity and debt financings, public market listings and acquisitions (including AIM). His areas of expertise include natural resources, financial services, and technology. Pawan is qualified to practice in England and was previously General Counsel for Sony Entertainment in Mumbai. His extensive experience assists Pawan in focusing on handling transactions for clients across the globe (in particular India) and managing such matters for clients wherever they arise.



## Raj Sharma ➡

Raj Sharma is a partner in the Pensions Group at Pinsent Masons, an international law firm. He specializes in pension matters, with particular expertise in pension fund investment where he advises on a wide range of investment arrangements and has spoken at a number of seminars and conferences. In June 2007 he chaired an Update on Pensions Law seminar in London. He is a member of the Association of Pension Lawyers and has been listed as a recognised pensions specialist in *Chambers and Partners*. Raj graduated from the Queen Mary & Westfield College of the University of London. He joined Biddle & Co in 1994 and moved to Slaughter and May in 1996 until 1998 when he joined Denton Hall. Raj then moved back to Slaughter and May in 2000 and joined Pinsent Masons as an associate in January 2005.



## Rajita Sharma

Rajita Sharma has been a partner in the UK Litigation Group at international law firm Reed Smith since 2005. She specializes in all aspects of intellectual property (IP) and information technology law, including patents, copyrights, trademarks, designs and the related areas of media/entertainment,

competition law and parallel imports. Her clients cover companies and individuals in the shipping, pharmaceutical, fashion, media and publishing, and banking sectors. Rajita is also qualified to practice in India and has experience of Indian IP and commercial litigation, particularly trademark litigation. Rajita graduated from the University of Mumbai (BSc chemistry and botany; LLB) and did her Masters at the University of London. She was called to the Bar in 1992 and was a pupil in the Chambers of Robin Jacob QC, a specialist IP chamber. She qualified as a solicitor in 2001 and, before joining Reed Smith in 2005, she was head of the European Intellectual Property team at the American firm Wildman Harrold.



### ◀ Jane Cheong Tung Sing

Jane Cheong Tung Sing has been a partner at Clifford Chance, the world's largest law firm, since 2005 and deals with all forms of structured finance (UK and European), with particular emphasis on senior and mezzanine investment and development debt finance, complex intercreditor arrangements, real estate joint ventures and real estate securitisations.

### Sonio Singh

Sonio Singh is a partner in the Corporate Department at Pannone, the Manchester-based law firm. He deals with corporate work, including acquisitions and disposals, equity-funded transactions as well as corporate and insolvent re-organisations. Sonio handles company start-ups and is experienced in the area of corporate governance and exit policies for shareholders of companies. He has advised a wide number of insolvency practitioners and purchasers relating to sales of the business and assets of insolvent companies and advised on pre-pack transactions. He has a broad range of clients, from owner-managed businesses to institutional clients as well as accountants, corporate financiers and insolvency practitioners based in the North West. Sonio, who joined Pannone in December 2003, graduated from Leeds University and joined Arthur Anderson in 1995. He completed his training contact at George Davies before qualifying as a solicitor in 1999.

## Leon Stephenson ➡

Leon Stephenson has been a banking partner at the international law firm Reed Smith since 2005. His work focuses primarily on corporate banking and finance transactions, particularly leveraged buyouts. Leon graduated from Gonville & Caius College, Cambridge, in 1994. He trained and qualified as a solicitor at the world's largest law firm, Clifford Chance. He left the firm in 2002 to join Cleary, Gottlieb, Steen & Hamilton, where he stayed until he joined Reed Smith in 2005. Leon qualified as a French lawyer, avocat, in 2000 and as a New York attorney in 2004.



## Vimal Tilakapala ➡

Vimal Tilakapala has been a tax partner since 2005 at Allen & Overy, a Magic circle law firm and one of the world's top six law firms. Vimal, a Manchester University graduate, joined Allen & Overy in September 2000, having worked previously at Jones Day and prior to that at Clifford Chance. Vimal works on finance-related tax matters, in particular, domestic and cross-border structured financing, capital markets issues, securitisation and the taxation of financial instruments.



## Mahesh Varia

Mahesh Varia has been a partner within the Employee Incentives Group at Travers Smith, a City firm with a major corporate and commercial practice. He specialises in employee incentives (including employee taxation) and advises companies, directors, trustees and employees on a wide range of issues, both in the context of corporate transactions and on a consultancy basis. Mahesh has been recognised in his field as being "Best of the UK (up and coming)" by *Chambers and Partners*. He is a member of the Association of Taxation Technicians and the Share Plan Lawyers Group. Among other matters he recently advised on the employee share incentive implications of Saga and the AA's merger and the subsequent implementation of an employee share offer to over 10,000 employees of the new group, the £1.1bn sale of McCarthy & Stone plc and the IPO of Cenkos Securities plc. He also advised on the landmark



Court of Appeal case of *John McCarthy v McCarthy & Stone plc* which concerns the recovery of PAYE from former employees. Mahesh was a trainee with Travers Smith, then became an assistant solicitor and was made a partner in July 2006.

### ☛ Nilufer von Bismarck

Nilufer von Bismarck is a corporate partner at the Magic circle law firm Slaughter and May and one of the most respected professionals in Mergers and Acquisitions. She featured in *The Lawyer* Top 100 2007 and was described as “a rising star in a very starry firmament”. She is highly rated by her clients and looks after Standard Chartered Bank, which she advised on its £667 million share placing to finance the offer for Taiwan-based Hsinchu International Bank, as well as Cable and Wireless and Tomkins. She acted for Cephalon, an international biopharmaceutical company, on its bid for Apax Partners-backed Zeneus Holdings; for Derwent Valley Holdings on its £2 billion merger with London Merchant Securities in 2006, and she was on the winning side when Granada finally won its £3.8 billion hostile bid for Forte after months of hostilities.

Nilufer who has contributed to the UK section in the Kluwer Law International publication entitled ‘Corporate Acquisitions and Mergers’ was educated at the James Allen’s Girls’ School, in Dulwich, South London. She went on to gain a BA in Law at Trinity College, Cambridge, in 1983. She trained at Norton Rose, and qualified in 1988. She joined Slaughter and May in 1990 and became a partner in 1994.



### ☛ Sandra Wallace

Sandra Wallace is a partner at DLA Piper – one of the largest law firms in the world. Sandra specializes in employment law, providing a high level strategic advice on diversity and discrimination issues, company reorganisations, changes in terms and conditions and policy reviews. She has worked with clients from a range of sectors, such as retail, telecommunications, financial and public sectors. Sandra is an experienced employment tribunal advocate. She handles

multi-day discrimination claims, constructive dismissals, unfair dismissals, redundancies and transfer of undertaking dismissals. Her experience includes successfully defending a retailer on a substantial claim of indirect sex discrimination, which was later upheld by the Employment Appeal Tribunal. She specializes in providing tailored training to personnel directors and managers in the area of employment law. Sandra is a member of the Employment Lawyers Association and in 2007 she became DLA Piper's head of Equality and Diversity (Employment Law).

### Sanjev Warnakulasuriya ➤

Sanjev Warnakulasuriya heads the Structured Finance practice as a partner at Slaughter and May, a Magic circle law firm. He advises a number of companies, banks, securities houses, hedge funds, private equity houses and other financial institutions on a wide range of capital markets, derivatives, leveraged finance, securitisation and structured finance matters. Having qualified as a solicitor with Slaughter and May in 1990, he became a partner in 1997 after a period working on capital markets and derivatives transactions with a leading US investment bank in London. Sanjev has acted for a number of financial institutions, including Abbey National, Cambridge Place, Citadel, Citigroup, Fortis, Fortress, Macquarie Bank, Morgan Stanley, Nomura, Nordax Finans, Nordea, Omicron Investment Management, Robeco, Societe Generale, SVG Capital, Terra Firma, UBS and UNIQA. The relevant transactions have included senior and mezzanine leveraged finance, whole business and CMBS securitisations, structured note programmes, cash and synthetic CDO's, Tier 1 capital-raising, hedging for securitisations, private-equity related securitisations, credit and equity derivatives (including total return and CPPI products), and tax-driven structured finance. He is a member of various working groups established by the International Capitals Market Association, the International Swaps Derivatives Association and the European Securitisation Forum.



## Sarah Wiggins

Sarah Wiggins became a partner at Linklaters, the world's second largest law firm, in 2000. She has been involved in a wide range of corporate transactions, including all types of Mergers and Acquisitions work, flotations, joint ventures and general corporate finance. She graduated from Manchester University in 1987 and joined Linklaters as an assistant solicitor in 1992.

## Nusrat Zar

Nusrat Zar read law at Oxford University and joined Herbert Smith as a trainee. She is now a partner in the Litigation and Arbitration Division in the London office. She advises on a range of public and administrative law matters, including *judicial review*, the European Convention on Human Rights, and regulatory and disciplinary proceedings. She also handles internal investigations. Nusrat acts for commercial organisations and public sector bodies, including regulators. She is named as a leading individual in the field of public and administrative law in *Chambers and Partners* 2007. *Chambers and Partners* ranks her as having secured a strong reputation for her “fantastic performances” in complex administrative and public law matters. She has written various articles for journals, including *Judicial Review*. To date, Nusrat has acted on a number of high-profile cases, these include acting for Ofgem in successfully defending judicial review proceedings brought by Scottish Power relating to new charges for the transmission of electricity around the UK, acting for Harrods Limited in a statutory appeal to the Lands Tribunal, successfully achieving a reduction in the rateable value of the Harrods store in Knightsbridge and acting for a subsidiary of BAA Plc in successfully defending judicial review proceedings which sought to challenge the procedure whereby taxis are allowed to enter Heathrow Airport and pick up passengers.